

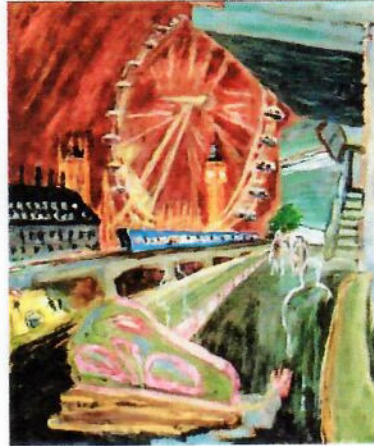
## SLIPSTREAM POETS

### EKPHRASTIC POETRY : PERSONAL PERSPECTIVES

A DISCUSSION / WORKSHOP led by Geoffrey Winch

Trinity Centre, Thakeham Road, Storrington

Monday 3rd July 2017 – 7 pm for a prompt 7.15 start



Seeing Big Ben through The Wheel

© Timothy Hyman, 2007-09

*(Private Collection)*

I've missed my train  
but it matters not  
for I've seen time  
in true perspective  
and turn my eyes to heaven

© Geoffrey Winch, 2013

*(South Bank Poetry No. 16)*

“An ekphrastic poem is a vivid description of a scene or, more commonly, a work of art. Through the imaginative act of narrating and reflecting on the ‘action’ of a painting or sculpture, the poet may amplify and expand its meaning.” *(The Poetry Foundation)*

But how much of ourselves should we invest in expanding its meaning? – especially if the meaning we perceive, or wish to impose, is likely to differ from that of the original artist?

These questions will form the basis of our discussion.

Please bring along a copy of a picture on which you would like to base an ekphrastic poem.

Slipstream Committee: Mandy Pannett (Chair), Diana Mitchener (Treasurer), Gillie Reid (Secretary) David Slade (Website)